

Mole View User Manual



DERMETRICS

The SIAscopy® Imaging Suite from ASTRON CLINICA

Copyright © 2006 Astron Clinica

Table of Contents

1. Mole View	3
1.1. Contact SIAscan	3
1.2. Taking a SIAscan	4
1.3. Image tools	5
1.4. Measuring tool	6
1.5. Viewing existing contact SIAscan	8
1.6. Score SIAscan	9
2. Acknowledgements and Notices	11
A. Revisions	11

1. Mole View

Mole view provides the user with the ability to take and view a contact SIA-scan. Before using the SIA-scope it is important that the **Instructions for use** manual has been fully read as it contains important information regarding health and safety.

1.1. Contact SIA-scan

This function allows a contact SIA-scan to be taken of the lesion. This technique will display a colour, melanin, dermal melanin, blood and collagen view of the area being investigated.

Important

To obtain the best possible image using the SIA-scope it is important to be aware of the following:

- **Clean the lesion area** - before commencing a scan using the SIA-scope it is important to clean the lesion area and in particular make sure that any make up is removed from the area.
- **Apply matching fluid** - It is important to apply matching fluid to the area that is being scanned. Matching fluid can be obtained from Astron Clinica.

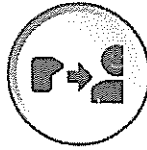
Warning

Do not apply matching fluid to open wounds

- **Cleaning the nose cone** - Before and after each patient examination clean the glass surface that is in contact with the patient skin with an Isopropyl wipe.
- **Hold the handset still** - Whilst taking a scan using the SIA-scope it is important to keep it still until the software has completed the scan.

1.2. Taking a SIAscan

Click on the **Take a SIAscan** button located in the tool bar.

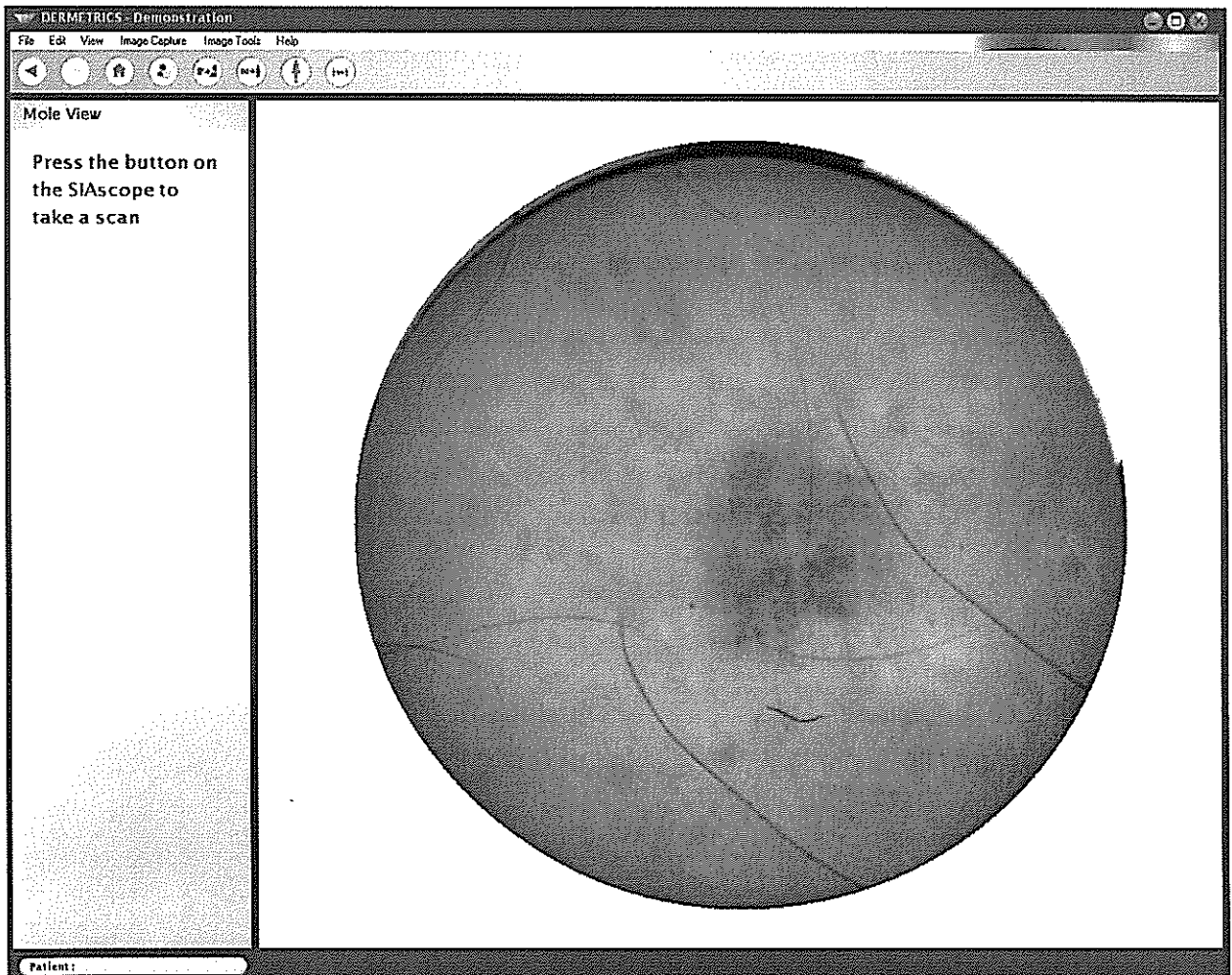


Apply matching fluid onto the area that is going to be scanned.

Warning

Do not apply matching fluid to open wounds

When the SIAscope has initialised, position it onto the lesion that is going to be scanned. A live image will be displayed on the screen and this can be used to centralise the lesion.



Press the button on the top of the SIAscope to start the scanning process.